

Firehouse Manual



Tools Needed:

- Cordless Drill (12V or higher)
- #2 Square Drive Bit
- Hammer
- 6' Step Ladder
- Tape Measure
- Square utility knife
w/ blade & hook blade
- Speed Square



Little Cottage Co.®
PO Box 455
Berlin, OH 44610
330-893-4212
www.cottagekits.com

© 2007-2008 Little Cottage Co.

Firehouse Manual



1



Thank You For purchasing from Little Cottage Co. Please note: the following pictures are from the construction of an 8x8, 8x10 and 8x12 units may vary slightly. Lay (2) 4x4 flooring sections side by side. Make sure it is on a level area.

2



Make sure the plywood is even before fastening! If it is not you will have an uneven floor, and it could cause problems later.

3



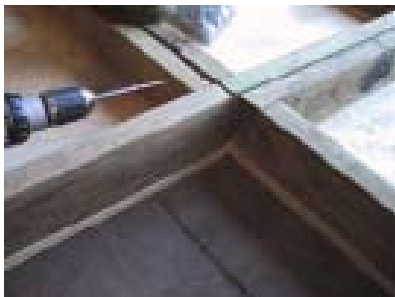
Screw the sections together. Put two screws in from each side for a total of 4 screws, one towards the plywood and one towards the top. Repeat this roughly every 8" to 10" apart.

4



Continue to add sections until you have the size you need. 8x8, 8x10, or 8x12.

5



Continue to make sure the plywood is even at the bottom. The 2x4 may vary in width at times.

6



continue with the floor assembly.

Firehouse Manual



7



This shows the optional 4x4 runners, you will need to have 3 in order to have 1 under the center joint. if you use 2 the floor will sag. Note: These are optional, but it will aid in moving the building later. If you are adding a Deck & Rail you MUST add these! Other wise the small door will not clear the deck.

8



Turn the floor around so that the plywood faces up. Make certain that the ground is level where the floor sets or you may have problems with panels or roof. You will need several to do this, do this with caution. Do not stand under the floor.

9



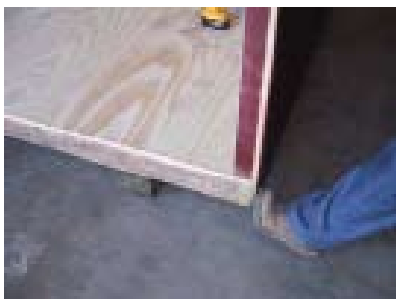
Install section A. Then install section B. And in the case of an 8x10, 8x12 install section 2B. Repeat on the other side. And again if it is a larger size you will have section 2C to assemble.

10



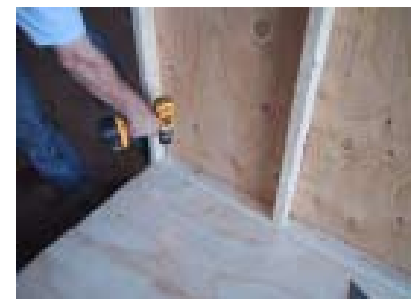
Keep the edge even with the floor.

11



Push in sections against floor before fastening.

12



Fasten sections in place and repeat on the other side.

Firehouse Manual



13



Install panel E. Keep the top walls level and push in the bottom.

14



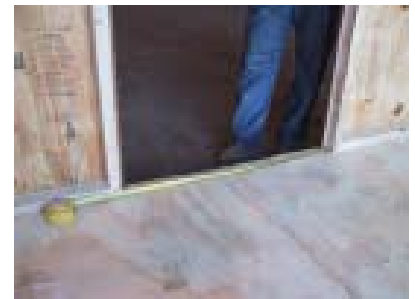
Continue with panel E until it is secure.

15



Next install panel F.

16



When installing panel F measure the distance between the 2x3's. Make sure this measurement is 34". If it is NOT 34", adjust the panels until it is. Otherwise, there will be problems when installing the adult door.

17



Next fasten panels G and H together. Note: keep the edge even. This will be the top of the door so this is very important. The trim should get to the bottom as can be seen in the picture.

18



You can keep both the top and bottom even.

Firehouse Manual



19



Fasten the top together.

20



Fasten the trim once panels G and H are together.

21



Put these on top of panels E and F.

22



Keep the edge of the door frame even and push in the trim against the siding. Fasten.

23



Repeat this on the other side.

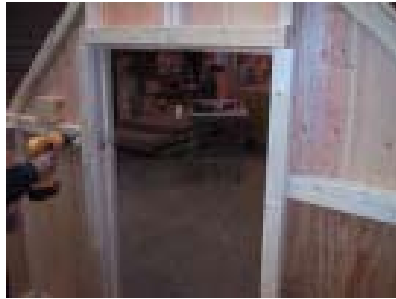
24



Continue until secure.

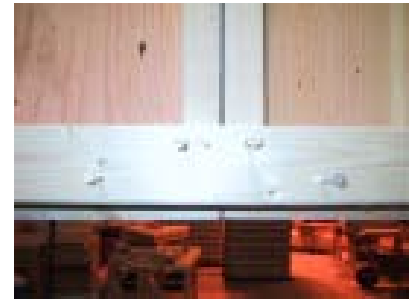


25



Install (3) 2'x3'x36" pieces over top of the door and sides of joints. This will provide strength for the door. Keep even with the edge of the door.

26



Install 4 screws as shown over joints.

27



Next Install panel I. Keep the top wall level and push in at the bottom.

28



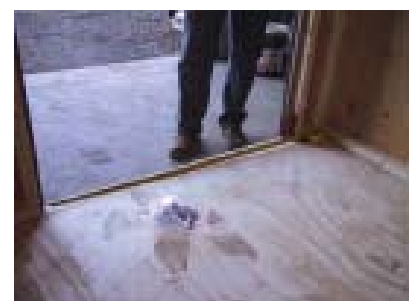
Pull in and fasten by the door.

29



Install panel J.

30



Measure between the door from 2x3 to 2x3. The measurement should be 40". If it is different adjust until it is. You may have to loosen the outside walls and move the slightly. (variation in wood widths)

Firehouse Manual



31



Next install panel K which is a small block.

32



Again keep the top level and fasten.

33



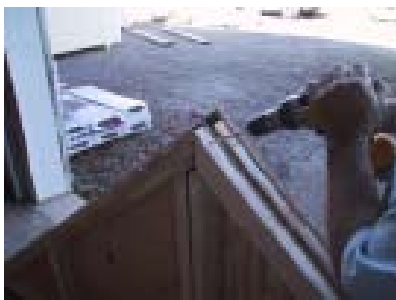
Keep the wall level and fasten trim on the outside.

34



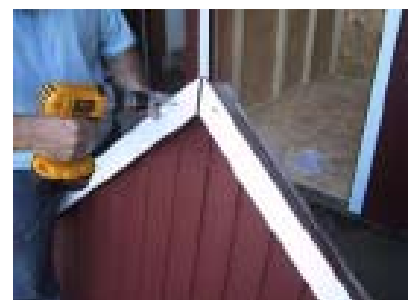
Fasten panels L and M to each other. Make sure they are even on the bottom. Piece may bow slightly

35



Fasten on the top.

36



Fasten the trim together.



37



Install these on top of panels I, J, K. Make sure that it is correctly aligned before fastening.

38



You can align this by measuring 5.5 inches from the edge to the inside of 2x3. Tip: You can also check the other wall to see how it is aligned.

39



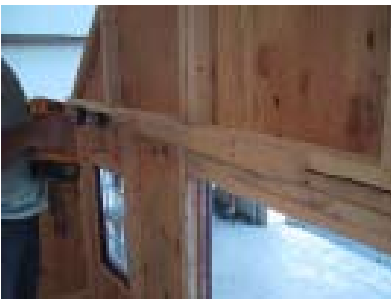
Push in the center before fastening. This will take out the bow.

40



Fasten the panel. Note where the panel is positioned.

41



Install the 2'x3'36" brace over joints. If you are installing a loft you will have to take this off. The loft will then provide support.

42



This shows an upside down look at how the trim will fit together. Do this to match the x's and o's. Do not fasten them like this.

Firehouse Manual



43



Install one side of 2x6 with attached trim. Be sure to use correct pieces.

44



Install the other side of 2x6 with trim. In the case of an 8x10 and 8x12 there will be an additional piece to install.

45



Install the last piece of trim.

46



Make sure the inside is even.

47



Fasten small blocks on bottom of 2x6. This will provide strength.

48



Put truss angles together. Note: You will have to match the correct angles that match the truss scabs. Do not use the rear truss (it is shorter).



49



Fasten truss gussets, keep top even. Install one gusset on either side of the truss. Make sure the gusset does not stick out past the truss, or roofing will not fit.

50



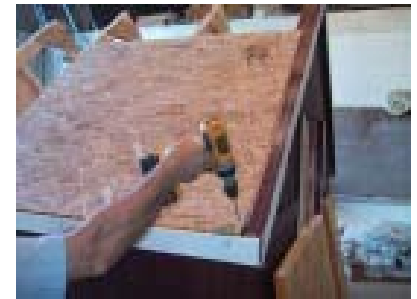
Install trusses in premarked spot. Note: trusses only come to the edge of the 2x6. You may have to pull them to the correct position. This is from not fastening the gussets correctly or from bowing wall or other factors.

51



This shows an 8x8. An 8x10 and 8x12 will have extra trusses. The trusses are positioned every 2' on center (or to the middle).

52



Install the first sheet of OSB sheathing. It will start at the edge of the endwall truss. There will be a 1/2" gap between OSB and 2x2.

53



Fasten at the top with the same measurement.

54



Fasten onto the truss. Remember it will only come to the center of the truss. This will allow room for the next sheet of OSB. You may have to move the truss from side to side

55



Install the next sheet of OSB.

56



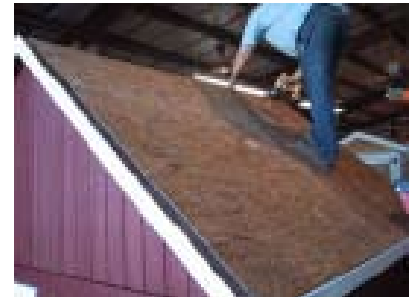
Continue OSB installation.

57



Install the top pieces of OSB.

58



Repeat on the other side.

59



Install the drip edge, which can be purchased at your home improvement store. You can then use tin snips or sidecuts to cut the drip edge so it fits over the angles of the roof. Fasten with 3/4" roofing nails.

60



Continue drip edge installation.

Firehouse Manual



61



Drip edge installation continued.

62



Read your shingle pack for installation instructions. You can use a utility knife to cut these both with a straight blade and a hook blade. Cut tabs off of the shingles and install a starter strip. Notice the glue strips toward the bottom. Fasten with 3/4" roofing nails.

63



Continue installing shingles in a staggered fashion.

64



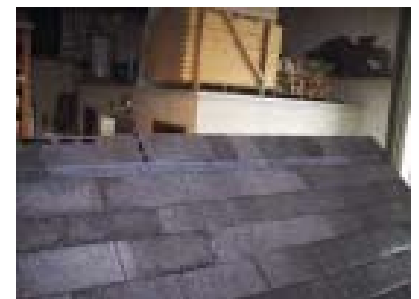
Keep installing shingles all the way to the top.

65



You will need to cut some tabs to this shape, to be used for the ridge cap.

66



Install the ridge cap on the top as shown. Use 7/8" roofing nails to fasten these.

67



Finish with a shingle tab as shown.

68



Install small pieces of siding beneath the fire engine door. Keep even with the floor.

69



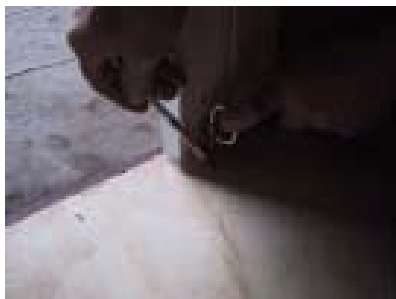
Place the space bar by the edge.

70



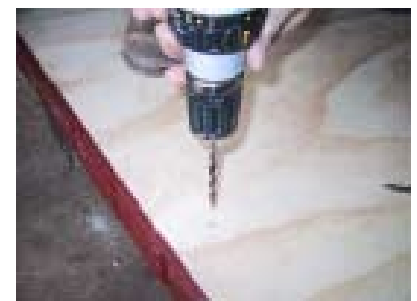
Install left door using spacer bar to provide the correct spacing. And install door stops as shown.

71



Close the door and mark around the door stops top and bottom.

72



Use 5/16 bit to drill holes for the door stops to slide into.

Firehouse Manual



73



Install right door and door turner.

74



Install 3 door pulls (two outside and one inside on the right hand door).

75



Install shutters and other pieces around window as shown.

76



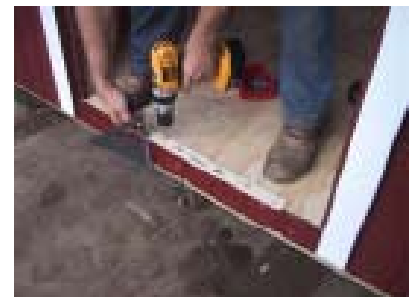
Install the "Firehouse USA" and "Engine #1" sign and the bell.

77



Install the corner trim using small white nails. Be careful to not "wrinkle" the corners when installing. Tip: do one side while pressing in, than do the other side.

78



Make sure you have installed the small piece of siding under door. Place spacer bar by edge, fasten with the screw (temporarily).

Firehouse Manual



79



Install the bottom part of the door.

80



Install the top piece of the door trim.

81



Install the top of the door, centering it between the top door trim and the bottom half of the door. Install latch.

82



Your Firehouse is complete!